

Dress  
(Item A)



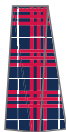
S/S Blouse  
(Item B)



V-Neck Jumper  
(Item C)



Anklet Socks  
(Item D)



Tab Tie  
(Item E)



Cullottes  
(Item F)



Wide Brim Hat  
(Item G)



Dress  
(Item A)



L/S Blouse  
(Item B)



V-Neck Jumper  
(Item C)



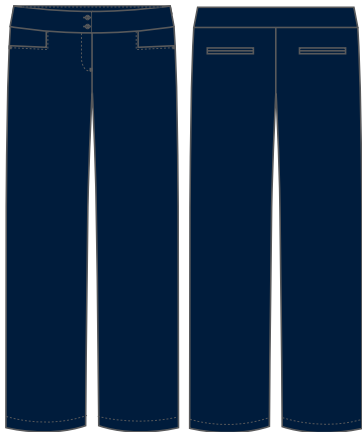
Bomber Jacket  
(Item D)



Tab Tie  
(Item E)



Cotton Tights  
(Item F)



7401 Pants  
(Item G)

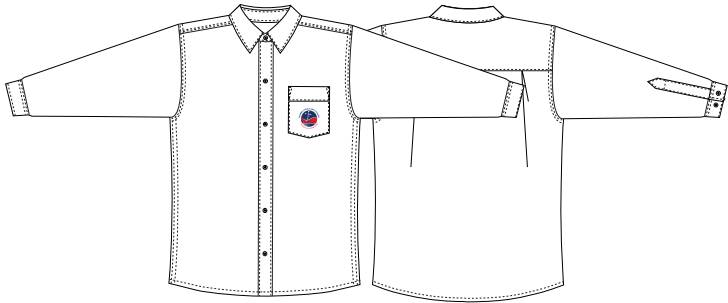


SK03 Socks  
(Item H)

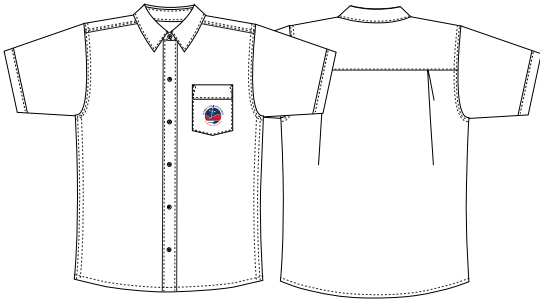


Wide Brim Hat  
(Item I)

NOWRA ANGLICAN COLLEGE  
BOYS JUNIOR WINTER AND SUMMER UNIFORM - YRS K-6  
SA0604/3



L/S Shirt  
(Item A)



S/S Shirt  
(Item B)



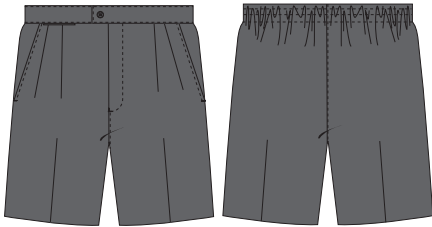
V-Neck Jumper  
(Item C)



Pants  
(Item D)



Loop Tie  
(Item E)



Shorts  
(Item F)



Knot Tie  
(Item G)



Wide Brim Hat  
(Item H)



Anklet Socks  
(Item I)

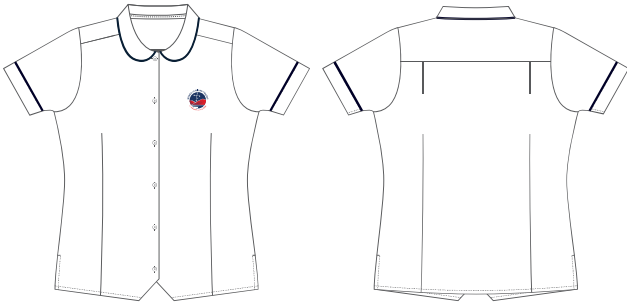


Bomber Jacket  
(Item J)

NOWRA ANGLICAN COLLEGE  
GIRLS MIDDLE SUMMER UNIFORM - YRS 7-10  
SA0604/4



Dress  
(Item A)



S/S Blouse  
(Item B)



V-Neck Jumper  
(Item C)



Anklet Socks  
(Item D)



Loop Tie  
(Item E)



Cullottes  
(Item F)



Tab Tie  
(Item G)



Wide Brim Hat  
(Item H)



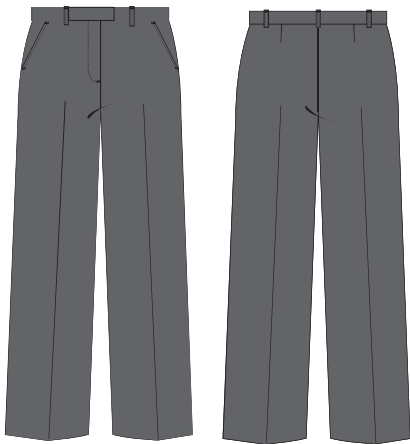
Blazer  
(Item A)



L/S Blouse  
(Item B)



V-Neck Jumper  
(Item C)



Pants  
(Item D)



Tights  
(Item E)



Skirt  
(Item F)



Loop Tie  
(Item G)

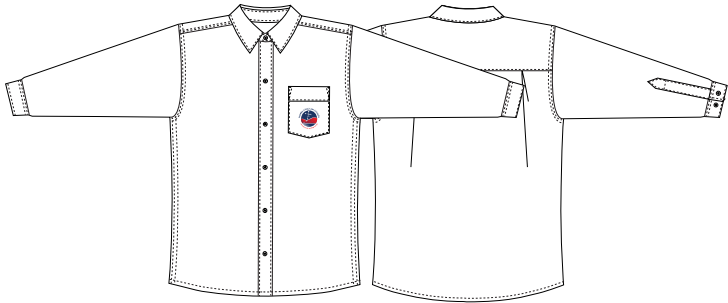


Tab Tie  
(Item H)

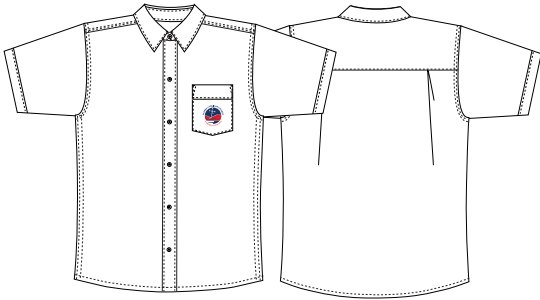


Wide Brim Hat  
(Item I)

NOWRA ANGLICAN COLLEGE  
BOYS MIDDLE WINTER AND SUMMER UNIFORM - YRS 7-10  
SA0604/6



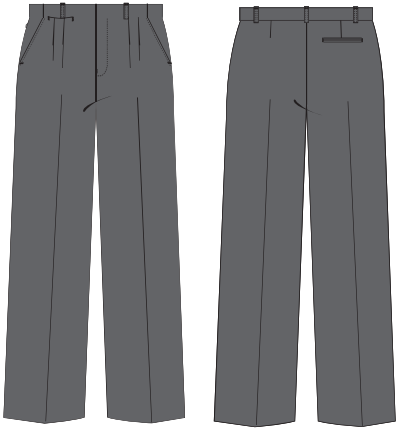
L/S Shirt  
(Item A)



S/S Shirt  
(Item B)



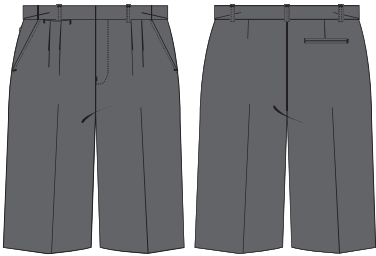
V-Neck Jumper  
(Item C)



Pants  
(Item D)



Knot Tie  
(Item E)



Shorts  
(Item F)



Tab Tie  
(Item G)



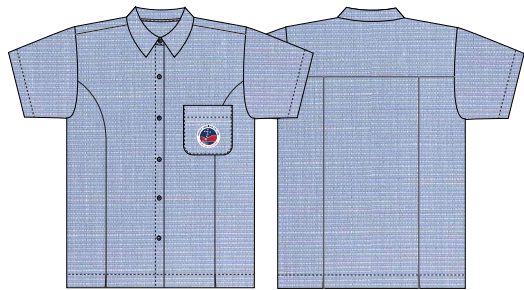
Wide Brim Hat  
(Item H)



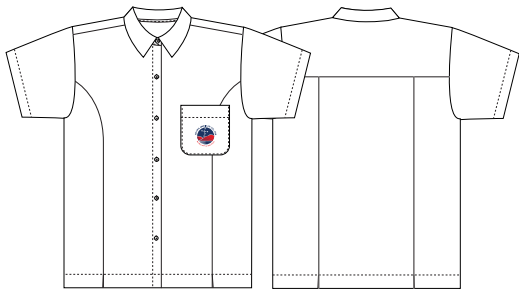
Anklet Socks  
(Item I)



Blazer  
(Item J)



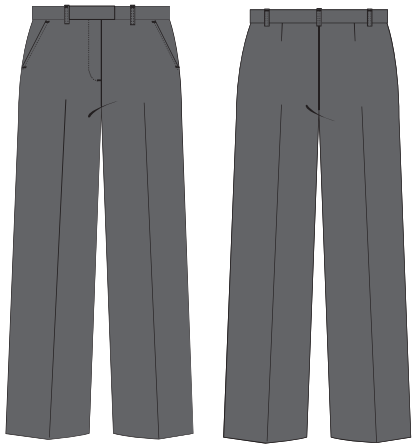
Blouse  
(Item A)



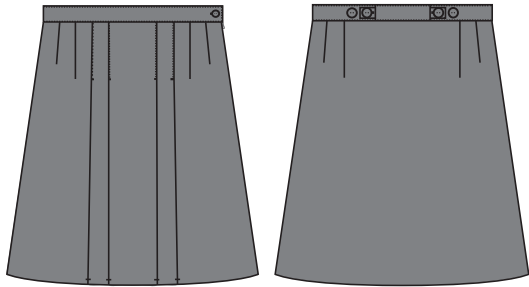
Blouse  
(Item B)



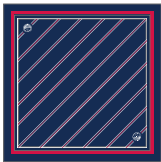
V-Neck Jumper  
(Item C)



Pants  
(Item D)



Skirt  
(Item E)



Collegiate Scarf  
(Item F)



Anklet Socks  
(Item G)



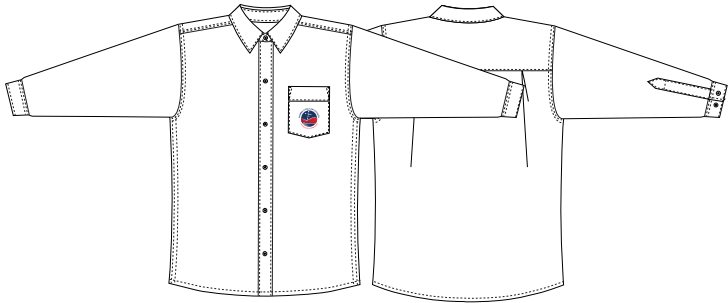
Blazer  
(Item H)



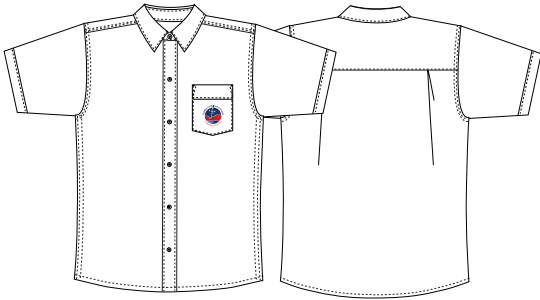
Tights  
(Item I)

# NOWRA ANGLICAN COLLEGE

BOYS COLLEGIATE SUMMER AND WINTER UNIFORM YRS 11-12  
SA0604/8



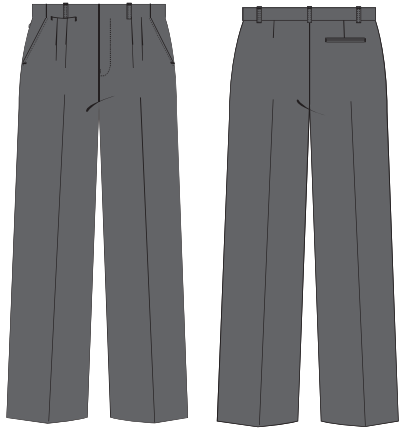
L/S Shirt  
(Item A)



S/S Shirt  
(Item B)



V-Neck Jumper  
(Item C)



Pants  
(Item D)



Shorts  
(Item E)



L/S Shirt  
(Item F)



Anklet Socks  
(Item G)



Blazer  
(Item H)



Collegiate Tie  
(Item I)