

At Bomaderry Community Preschool we acknowledge the unique and important phase of life that is Early Childhood. The early years are particularly significant as it lays the foundation for all future learning, and sense of belonging. It is important that children feel that they are capable, competent and valued within the context of their family, our preschool and the community. BCPS acknowledges the critical importance of children, parents and educators as partners in a learning community that promotes the wellbeing, education and development of all children.

**"The best school after all, for the world of childhood is not the school where children know the most answers but the school where children ask the most questions."  
Lae (1987)**

Our program,, enables the educators to embrace the uniqueness and individuality of each child, their family and culture.

**Viewing children as active participants and decisions makers opens up possibilities for educators to move beyond expectations about what children can do and learn. This requires educators to respect and work with each child's unique qualities and abilities.  
EYLF, 2011**



**CONNECT WITH US**

**Bomaderry Community Preschool**  
Cnr Birriley & Coomea Streets  
Bomaderry NSW 2541  
P: (02) 4421 4034 F: (02) 4422 8785  
E: [bcps@sras.nsw.edu.au](mailto:bcps@sras.nsw.edu.au)  
<https://www.nac.nsw.edu.au/learning/early-learning>



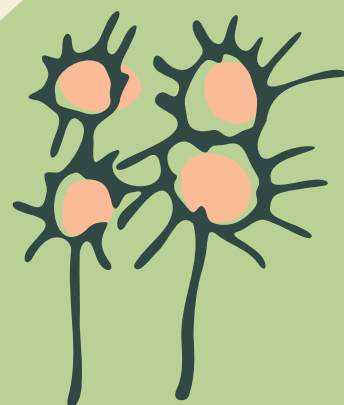
## OUR SERVICES

Bomaderry Community Preschool offers early education for children between the ages of three and five. We offer a 3-day program which runs on Mondays, Tuesdays and Wednesdays or Wednesdays, Thursdays and Fridays and a 2-day program which runs on Monday and Tuesdays or Thursdays and Fridays.

Our hours are 8AM-4PM, Monday to Friday. We operate for 40 weeks/year.

## LOCATION

Our Preschool operates over two campuses. The Wattle and Gumnut rooms are located at Birriley Street, Bomaderry and the Banksia room is situated next to Nowra Anglican College. Each picturesque centre has its own unique open spaces and playing areas allowing for both group and individual experiences.



**Yulunga**

**Welcome**  
TO OUR PLACE



**Bomaderry Community Preschool**  
**Banksia & Wattle/Gumnut Rooms**







## OUR LEARNING ENVIRONMENT

Our philosophy acknowledges our preschool environment as the 'third teacher', recognizing the extraordinary potential it has to challenge, provoke and inspire children's learning. The outdoor learning environment is an integral part of the learning environment, the potential for play is endless and limited only by the imagination.

Based on the Early Years Framework, our Preschool offers a supportive and child-centred educational environment that harnesses the natural curiosity of children and stimulates a love of learning through play based experiences.

At Bomaderry Community Preschool, special emphasis is placed on play-based learning, a context for learning through which children organise and make sense of their social world, as they actively engage with people, objects and representations.

### BCPS is a Child Safe Organisation

**"Learning and teaching should not stand on opposite banks and just watch the river flow by; instead, they should embark together on a journey down the water. Through an active, reciprocal exchange, teaching can strengthen learning and how to learn."**

**Malaguzzi, 1988. P.83**



## We provide secure, nurturing and stimulating Early Childhood environments where:

### CHILDREN ARE:

- Active participants in the learning process
- Valued highly
- Encouraged to enquire and question
- Constantly reflecting and self-assessing
- Extended in their own and others interests
- Explore and experiment

### EDUCATORS ARE:

- Facilitators in the learning process
- Active learners alongside the children
- Encouraging children to discover and retrace their learning
- Reflect on best practice and self-evaluation
- Flexible in their planning

### FAMILIES ARE:

- Encouraged to take an active role
- Advocates for their children's learning
- Partners and collaborators
- Encouraged to share their knowledge, skills and interests
- Valued for their contributions to learning

### ENVIRONMENTS ARE:

- Sustainable, dynamic & beautiful
- Offer many possibilities, open ended
- Offer risky play